



NOR-LAKE, INCORPORATED
727 Second Street
Hudson, Wisconsin 54016

800-955-5253
715-386-2323
866-961-5253 Parts
800-388-5253 Service
715-386-6149 FAX
www.norlake.com

ADVANTEDGE™ SANDWICH FOOD PREP REFRIGERATORS

SANDWICH FOOD PREP REFRIGERATORS



PROJECT:
.....
ITEM NUMBER:
.....
MODEL NUMBER:
.....

SPECIFICATIONS FOR: NLSP27-8, NLSP36-10, NLSP48-12, NLSP60-16, NLSP72-18

- **Finish:** Stainless steel interior and exterior
- **Insulation:** Complete cabinet and doors are foamed-in-place with polyurethane insulation, insulated pan covers.
- **Hardware:** Curved handle with recessed pocket with one shelf per door, 6" overall height casters standard
- **Electrical:** 115 volt, 60 Hz, 1 phase with cord and plug
- **Refrigeration:** Self-contained forced air refrigeration system. The condensate is collected and automatically evaporated from an energy efficient vaporizer. Refrigerant flow is controlled by a capillary tube. R290 refrigerant. Temperature range: +34°F to +38°F for storage area, +33°F to +41°F for refrigerated pan well.
- **Accessories:** 1/6 size pans, locking pan adapter bars and 9-1/2" polyethylene cutting board included
- **Approvals:** UL, C-UL Safety and ETL Sanitation listed **

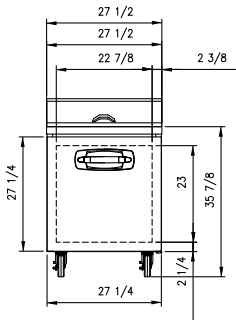
STANDARD FEATURES

- 1/6 size pans included in all models
- Locking pan adapter bars
- Air cooled condensing unit
- Automatic condensate vaporizer
- Automatic defrost
- Capillary tube system
- Casters
- Cutting board
- Field reversible door on NLSP27-8

OPTIONAL FEATURES*

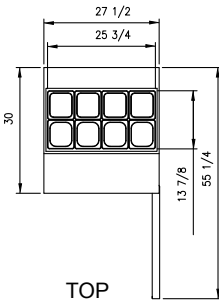
- Magnetic gaskets
- Self-closing doors
- Stainless steel interior and exterior
- UL, C-UL Safety and ETL Sanitation listed **
- Warranties: 3 year parts & labor, 5 year compressor
- 6" legs in lieu of casters
- 4" casters in lieu of standard casters
- Additional shelves
- Overshelf assemblies (single and double)

* Most options are available two weeks from receipt of order. Please contact us for specific questions.
** C-UL is Underwriters Laboratories Safety Certification Mark which indicates that UL has tested the equipment to applicable CSA Standards.
** ETL Sanitation is Intertek Sanitation Mark which indicates that Intertek has tested the equipment to applicable NSF Standards..

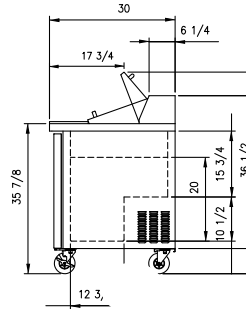


FRONT

NLSP27-8



TOP

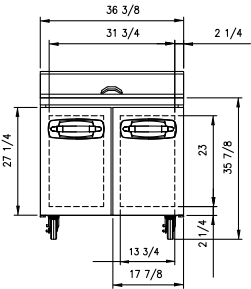


SIDE
ALL MODELS

SPECIFICATIONS

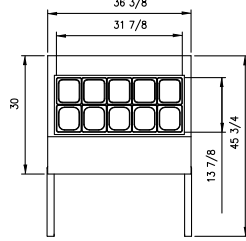
Models	NLSP27-8	NLSP36-10	NLSP48-12	NLSP60-16	NLSP72-18
Crated Weight (lbs) (kg)	157 (71)	190 (86)	234 (106)	256 (116)	298 (135)
Crated Height (in) (cm)	44-3/8 (113)	44-3/8 (113)	44-3/8 (113)	44-3/8 (113)	44-3/8 (113)
Crated Width (in) (cm)	30-1/8 (77)	38 (97)	51-1/4 (130)	63 (160)	74-3/8 (189)
Crated Depth (in) (cm)	33-1/2 (85)	33-1/2 (85)	33-1/2 (85)	33-1/2 (85)	33-1/2 (85)
Interior Height (in) (cm)	20 (51)	20 (51)	20 (51)	20 (51)	20 (51)
Interior Width (in) (cm)	23-5/8 (60)	32-1/2 (83)	44-5/8 (113)	56-5/8 (144)	68-5/8 (174)
Interior Depth (in) (cm)	22 (56)	22 (56)	22 (56)	22 (56)	22 (56)
Overall Height (in) (cm)	42-1/2 (108)	42-1/2 (108)	42-1/2 (108)	42-1/2 (108)	42-1/2 (108)
Overall Width (in) (cm)	27-1/2 (70)	36-3/8 (92)	48-1/4 (123)	60-3/8 (153)	72-3/8 (184)
Overall Depth (in) (cm)	30 (76)	30 (76)	30 (76)	30 (76)	30 (76)
Gross Cubage (CuFt) (L)	6.7 (190)	9.1 (258)	12.5 (354)	15.9 (450)	19.2 (544)
Number of 1/6 Pans	8	10	12	16	18
Number of Shelves	1	2	2	2	3
Shelf Area (SqFt) (Sqm)	3.6 (0.33)	5 (0.46)	6.8 (0.63)	8.6 (.080)	10.5 (0.98)
Number of Casters	4	4	4	4	4
Condensing Unit Size	1/5 HP	1/5 HP	1/5 HP	1/5 HP	1/5 HP
Refrigerant	R290	R290	R290	R290	R290
Electrical Characteristics	115/60/1	115/60/1	115/60/1	115/60/1	115/60/1
Cord and Plug Furnished	Yes	Yes	Yes	Yes	Yes
NEMA Plug Configuration	5-15P	5-15P	5-15P	5-15P	5-15P
Total Amp Draw	3.5	3.5	3.5	3.5	3.5

Specifications subject to change without notice.

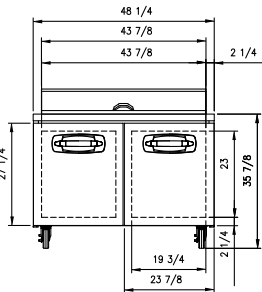


FRONT

NLSP36-10

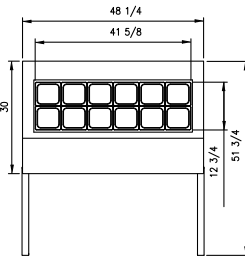


TOP

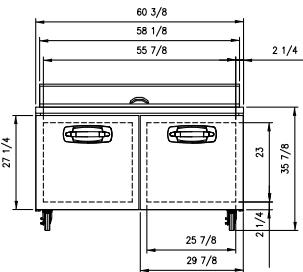


FRONT

NLSP48-12

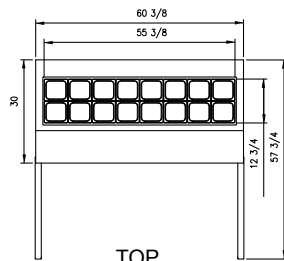


TOP

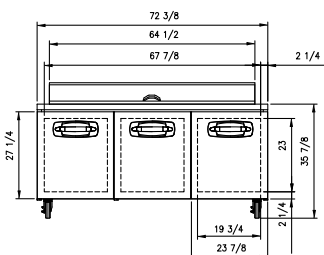


FRONT

NLSP60-16A

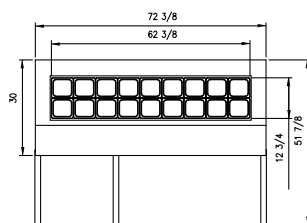


TOP



FRONT

NLSP72-18



TOP



Revision Date: 7/20
Part Number: 146621