



NOR-LAKE, INCORPORATED
727 Second Street
Hudson, Wisconsin 54016

800-955-5253
715-386-2323
866-961-5253 Parts
800-388-5253 Service
715-386-6149 FAX
www.norlake.com

ADVANTEDGE™ UNDERCOUNTER / WORKTABLE FREEZERS



PROJECT:
.....
ITEM NUMBER:
.....
MODEL NUMBER:
.....

UNDERCOUNTER / WORKTABLE FREEZERS

SPECIFICATIONS FOR: NLUF27, NLUF48, NLUF60

- Finish: Stainless steel interior and exterior
- Insulation: Complete cabinet and doors are foamed-in-place with polyurethane insulation
- Hardware: Curved handle with recessed pocket; one vinyl coated shelf per door; 6" overall height casters
- Electrical: 115 volt, 60 Hz, 1 phase with cord and plug
- Refrigeration: Self-contained forced air refrigeration system. Condensate is collected and automatically evaporated from an energy efficient vaporizer. Refrigerant flow controlled by a capillary tube. R290 refrigerant. Temperature range: -5°F to 0°F
- Approvals: UL, C-UL Safety and ETL Sanitation listed**, ADA compliant***

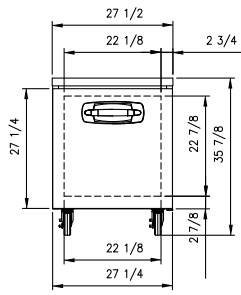
STANDARD FEATURES

- Air cooled condensing unit
- Automatic condensate vaporizer
- Automatic defrost
- Capillary tube system
- Casters
- Curved handle with recessed pocket
- Magnetic gaskets
- Self-closing doors
- Stainless steel interior and exterior
- One interior shelf per door
- UL, C-UL Safety and ETL Sanitation listed **
- Warranties: 3 year parts & labor, 5 year compressor

OPTIONAL FEATURES*

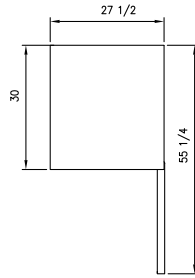
- Additional shelves
- Stainless steel backsplash
- Low profile casters***
- Single and double overshef assemblies
- 6" legs in lieu of casters (shipped loose)

* Most options are available two weeks from receipt of order. Please contact us for specific questions.
** C-UL is Underwriters Laboratories Safety Certification Mark which indicates that UL has tested the equipment to applicable CSA Standards.
*** Casters available for 34" or 32" overall cabinet height.

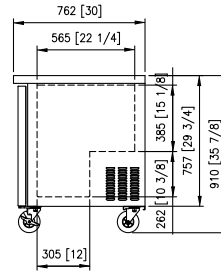


FRONT VIEW

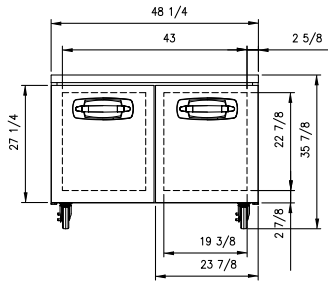
NLUF27



TOP VIEW

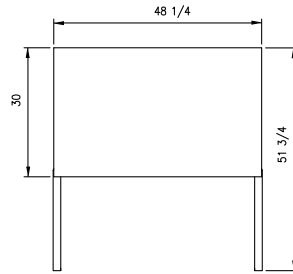


ALL MODELS
SIDE VIEW

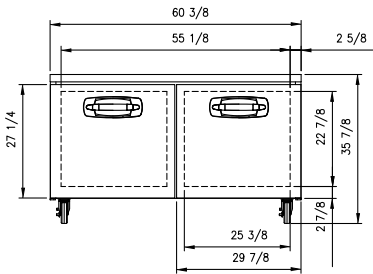


FRONT VIEW

NLUF48

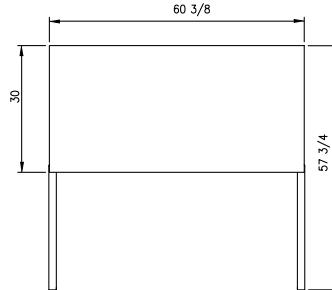


TOP VIEW



FRONT VIEW

NLUF60



TOP VIEW

SPECIFICATIONS

Models	NLUF27	NLUF48	NLUF60
Crated Weight (lbs) (kg)	143 (65)	220 (100)	254 (115)
Crated Height (in) (cm)	36 (91)	36 (91)	36 (91)
Crated Width (in) (cm)	30-1/8 (77)	51-1/4 (130)	63 (160)
Crated Depth (in) (cm)	33-1/2 (85)	33-1/2 (85)	33-1/2 (85)
Interior Height (in) (cm)	25-1/2 (65)	25-1/2 (65)	25-1/2 (65)
Interior Width (in) (cm)	23 (58)	43-3/4 (111)	55-7/8 (142)
Interior Depth (in) (cm)	21-1/2 (55)	21-1/2 (55)	21-1/2 (55)
Overall Height (in) (cm)	35-7/8 (91)	35-7/8 (91)	35-7/8 (91)
Overall Width (in) (cm)	27-1/2 (70)	48-1/4 (123)	60-3/8 (153)
Overall Depth (in) (cm)	30 (76)	30 (76)	30 (76)
Gross Cubage (CuFt) (L)	6.0 (170)	11.4 (323)	14.6 (413)
Number of Shelves	1	2	2
Shelf Area (SqFt) (SqM)	3.4 (0.32)	6.5 (0.60)	8.3 (0.77)
Number of Casters	4	4	4
Condensing Unit Size	1/5 HP	1/2 HP	1/2 HP
Refrigerant	R290	R290	R290
Electrical Characteristics	115/60/1	115/60/1	115/60/1
Cord and Plug Furnished	Yes	Yes	Yes
NEMA Plug Configuration	5-15P	5-15P	5-15P
Total Amp Draw	3.5	7.5	7.5

Specifications subject to change without notice.



Revision Date: 7/20
Part Number: 146623