



NOR-LAKE, INCORPORATED  
727 Second Street  
Hudson, Wisconsin 54016

800-955-5253  
715-386-2323  
866-961-5253 Parts  
800-388-5253 Service  
715-386-6149 FAX  
www.norlake.com

## ADVANTEDGE™ UNDERCOUNTER / WORKTABLE REFRIGERATORS

UNDERCOUNTER / WORKTABLE REFRIGERATORS



PROJECT:  
.....  
ITEM NUMBER:  
.....  
MODEL NUMBER:  
.....

### SPECIFICATIONS FOR: NLUR27, NLUR36, NLUR48, NLUR60, NLUR72

- **Finish:** Stainless steel interior and exterior
- **Insulation:** The complete cabinet and doors are foamed-in-place with polyurethane insulation
- **Hardware:** Curved handle with recessed pocket; one vinyl coated shelf per door; 6" overall height casters
- **Electrical:** 115 volt, 60 Hz, 1 phase with cord and plug
- **Refrigeration:** Self-contained forced air refrigeration system. The condensate is collected and automatically evaporated from an energy efficient vaporizer. Refrigerant flow is controlled by a capillary tube. R290 refrigerant. Temperature range: +34°F to +38°F.
- **Approvals:** UL, C-UL Safety, and ETL Sanitation\*\*, and ADA compliant\*\*\*

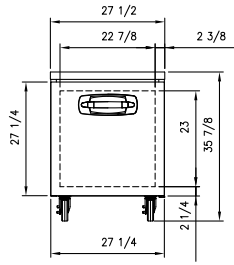
### STANDARD FEATURES

- Air cooled condensing unit
- Automatic condensate vaporizer
- Automatic defrost
- Capillary tube system
- Casters
- Curved handle with recessed pocket
- Magnetic gaskets
- Self-closing doors
- Stainless steel interior and exterior
- One interior shelf per door
- UL, C-UL Safety, and UL Sanitation listed\*\*
- Warranties: 3 year parts & labor, 5 year compressor

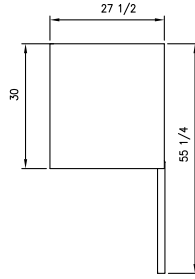
### OPTIONAL FEATURES\*

- Additional shelves
- Low profile casters\*\*\*
- Single and double overself assemblies
- 6" legs in lieu of casters (shipped loose)

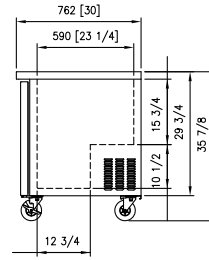
\* Most options are available two weeks from receipt of order. Please contact us for specific questions.  
\*\* C-UL is Underwriters Laboratories Safety Certification Mark which indicates that UL has tested the equipment to applicable CSA Standards.  
\*\* ETL is Intertek's Sanitation Mark which indicates that Intertek has tested the equipment to applicable NSF Standards.  
\*\*\* Casters available for 34" or 32" overall cabinet height.



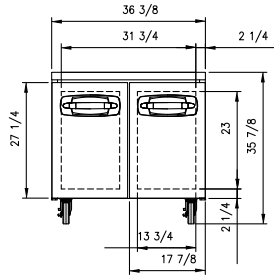
FRONT VIEW NLUR27



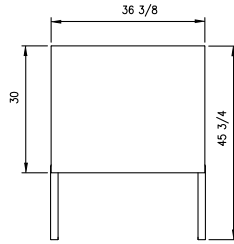
TOP VIEW



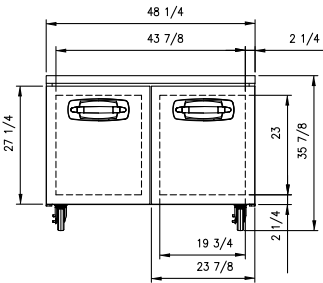
ALL MODELS SIDE VIEW



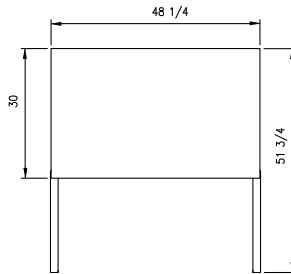
FRONT VIEW NLUR36



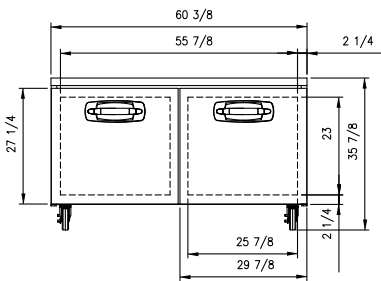
TOP VIEW



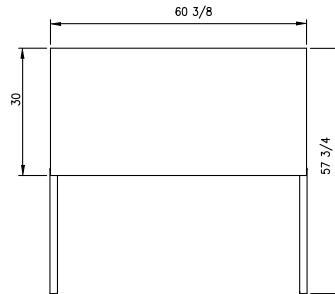
FRONT VIEW NLUR48



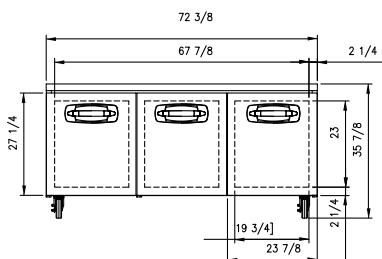
TOP VIEW



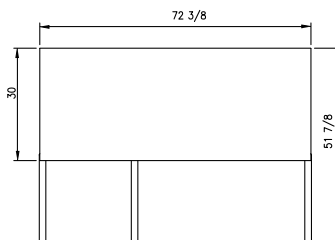
FRONT VIEW NLUR60



TOP VIEW



FRONT VIEW NLUR72



TOP VIEW

**SPECIFICATIONS**

Models	NLUR27	NLUR36	NLUR48	NLUR60	NLUR72
Crated Weight (lbs) (kg)	134 (61)	170 (77)	209 (95)	231 (105)	267 (121)
Crated Height (in) (cm)	36 (91)	36 (91)	36 (91)	36 (91)	36 (91)
Crated Width (in) (cm)	30-1/8 (77)	38 (97)	51-1/4 (130)	63 (160)	74-3/8 (189)
Crated Depth (in) (cm)	33-1/2 (85)	33-1/2 (85)	33-1/2 (85)	33-1/2 (85)	33-1/2 (85)
Interior Height (in) (cm)	26-1/4 (67)	26-1/4 (67)	26-1/4 (67)	26-1/4 (67)	26-1/4 (67)
Interior Width (in) (cm)	23-5/8 (60)	32-1/2 (83)	44-5/8 (113)	56-5/8 (144)	68.63 (174)
Interior Depth (in) (cm)	22 (56)	22 (56)	22 (56)	22 (56)	22 (56)
Overall Height (in) (cm)	35-7/8 (91)	35-7/8 (91)	35-7/8 (91)	35-7/8 (91)	35-7/8 (91)
Overall Width (in) (cm)	27-1/2 (70)	36-3/8 (92)	48-1/4 (123)	60-3/8 (153)	70-3/8 (179)
Overall Depth (in) (cm)	30 (76)	30 (76)	30 (76)	30 (76)	30 (76)
Gross Cubage (CuFt) (L)	6.7 (190)	9.1 (258)	12.5 (354)	15.9 (450)	19.2 (543)
Number of Shelves	1	2	2	2	3
Shelf Area (SqFt) (Sqm)	3.6 (0.33)	5 (0.46)	6.8 (0.63)	8.6 (0.80)	10.5 (0.93)
Number of Casters	4	4	4	4	4
Condensing Unit Size	1/5 HP	1/5 HP	1/5 HP	1/5 HP	1/5 HP
Refrigerant	R290	R290	R290	R290	R290
Electrical Characteristics	115/60/1	115/60/1	115/60/1	115/60/1	115/60/1
Cord and Plug Furnished	Yes	Yes	Yes	Yes	Yes
NEMA Plug Configuration	5-15P	5-15P	5-15P	5-15P	5-15P
Total Amp Draw	3.5	3.5	3.5	3.5	3.5

Specifications subject to change without notice.



Revision Date: 7/20  
Part Number: 146627